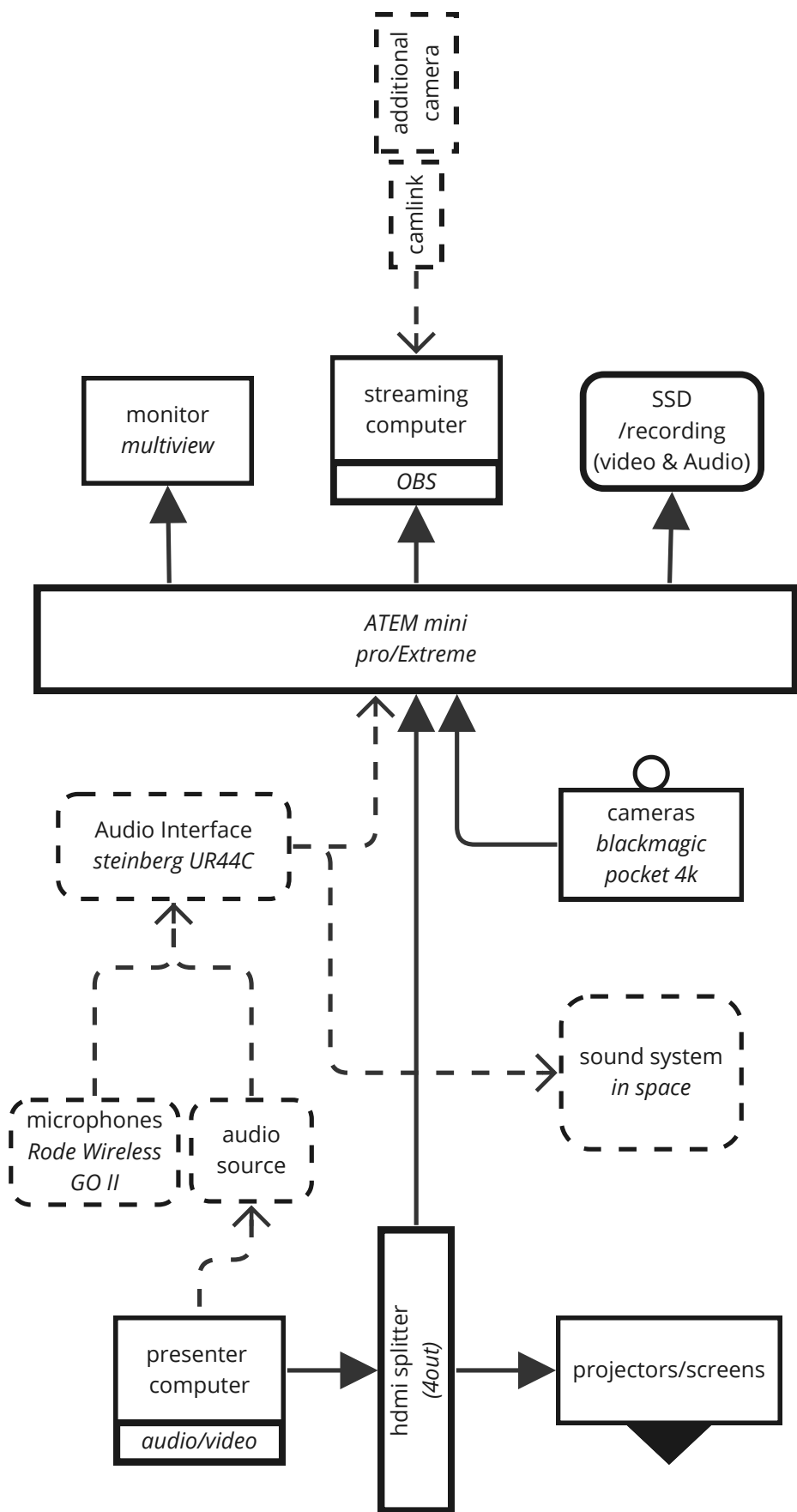


streamingkit ►

user manual

**In
K
c:Le**



- - - - - Audio Signal - - - - -

————— Video Signal —————



- more heavy but on wheels
- use in standing position or on the table
- including containers for peripheral devices
- including atem mini extreme

streamingkit



- lightweight and easy to transport
- stationary setup
- no containers for peripheral devices

streamingkit_mni

streamingkit



Assemble the Computer table extension (optional)



possible to use while standing

Power up!



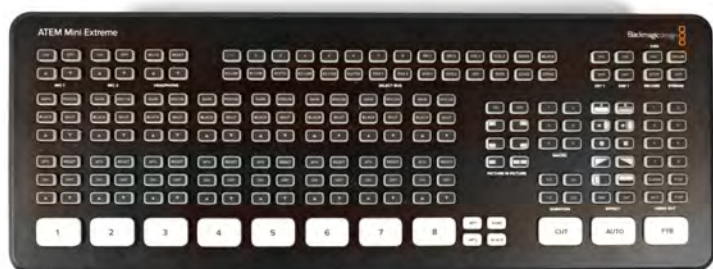
1. open the Streaming kit.
2. connect power cable or power strip bar with electricity.
3. check the monitor is powered by USB.
4. press M/V on Atem mini,
monitor(plugged in V-5) should now
show the multiview from atem mini.
(If not, check more on next page)

Mixer Connection

Atem Mini Pro



1. check if power cable(P-1) is connected and powered with the power strip bar.
2. connect the camera(s) into Atem HDMI input (V-1~V-4).
3. connect Atem mini usb-c output(C-1) to computer.
4. check if Atem mini HDMI output(V-5) is connected to the monitor.
5. check if M/V is selected on Atem mini.



Atem Mini Extreme and Atem Mini Pro works almost the same, Extreme model has more HDMI Inputs as well as usb-c ports. You can plug a ssd hard drive onto a usb-c port to directly record with the Atem Mini Extreme.

Video Connection

HDMI Splitter



1. connect presenter computer to HDMI splitter input(V-6).
2. connect one splitter output(V-7) to Atem HDMI input (V-3).
3. connect another splitter output(V-8) to a screen or beamer in room.

Video Connection cameras



1. setup tripods.
2. plug in charger. (The battery does not last long, it should be charged when streaming).
3. switch on the cameras.
4. connect HDMI cables from cameras to aTEM.

Video Connection

HDMI Splitter



1. connect presenter computer to HDMI splitter input(V-6).
2. connect one splitter output(V-7) to Atem HDMI input (V-3).
3. connect another splitter output(V-8) to a screen or beamer in room.

Video Connection cameras



1. setup tripods.
2. plug in charger. (The battery does not last long, it should be charged when streaming).
3. switch on the cameras.
4. connect HDMI cables from cameras to aTEM.



1. Plug in power cable(P-3).
2. Connect main output(A-3) to speakers with two Jack-to-XLR cables.
3. Connect monitor output(A-8) to Atem mini audio input(A-1) with stereo jack-to-mini jack cable.
4. Connect two rode receivers with its XLR converter(A-4, A-5).
5. Connect presenter's pc audio with mini jack-to-jack cable(A-6).

Audio Connection

RODE wireless microphone



1. there are two groups of Rode microphone, one can differentiate them with its name.
2. keep charged, charging while in use might come to interference.
3. can be clipped on persons collar, onto a tripod, or used as hand-held microphone.



4. switch on the receiver (hold 3 seconds).
5. switch on the microphones (hold 3 seconds).
6. unmute/mute the microphone (short press once).



7. adjust the receiving volume to maximum(short press db button).

Stream

Prepare Streaming Link

The screenshot shows the 'udk/stream' portal. At the top, there's a search bar and a 'Veröffentlichen' button. The main content area displays a grid of video thumbnails with titles like 'LOOPS - Michael Nitsche, Steph...', 'Trailer: Because of - Using prote...', 'Juxtapositions 4 #04 - Berlin St...', 'Einblicke in das Lehrstuhlstudio...', 'Techniken des Theaters - Impro...', 'Techniken des Theaters - Micha...', 'LOOPS - Birgit Schneider & Klas...', and 'LE NOZZE DI FIGARO im UNLT...'. Below the grid, there's a 'Live gehen' button and a form for creating a new stream. The form includes a 'Kanal' dropdown menu (set to 'inkuele_channel'), a 'Datenschutz' dropdown menu (set to 'Öffentlich'), and two radio button options: 'Normale Live-Übertragung' (selected) and 'Permanente Live-Übertragung'. The 'Normale Live-Übertragung' option has a description: 'Nur einmal streamen und eine Aufzeichnung der Übertragung speichern'. The 'Permanente Live-Übertragung' option has a description: 'Mehrere Male streamen, Aufzeichnungen können nicht gespeichert werden'. At the bottom of the form is a 'Live gehen' button.

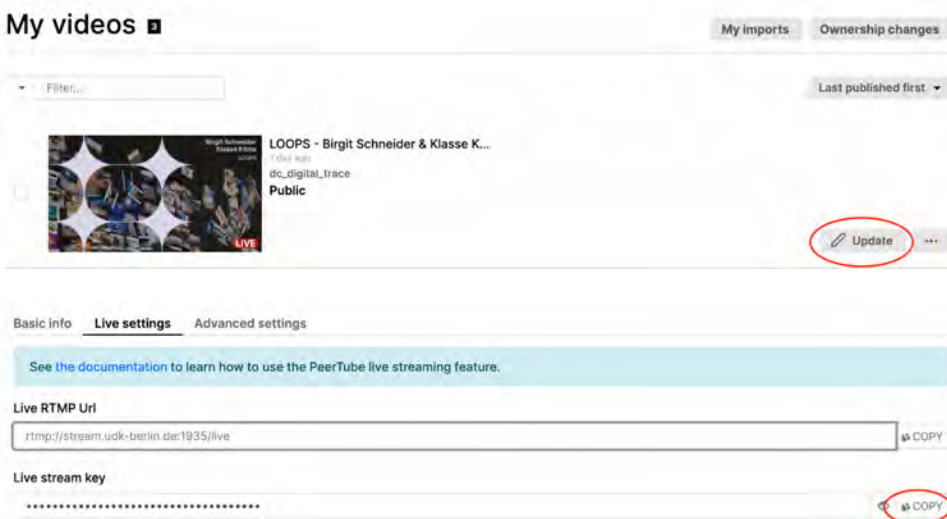
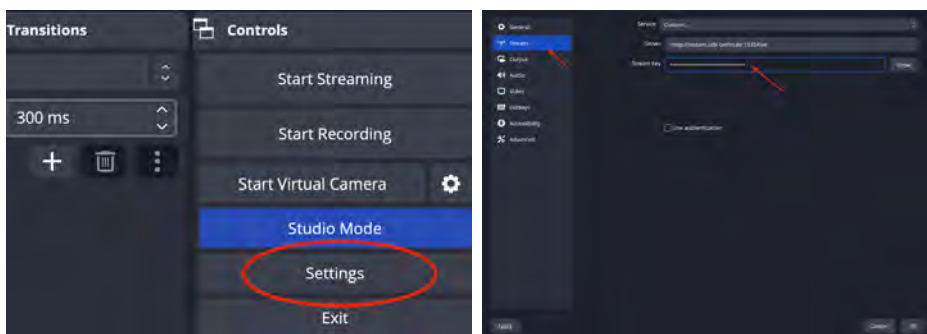
1. create the stream in your portal, for udk use:
<http://stream.udk-berlin.de/login>
login info is your udk credentials
2. select if you want a permanent stream (not archived) or a one time stream (archived)
3. copy the live stream key and URL, and open OBS from the desktop

troubleshooting:

For more info on stream.udk-berlin.de please check <https://stream.udk-berlin.de/w/1pUGxTK94VCyf79DXZwAkb>

Stream

Set Streaming Link in OBS



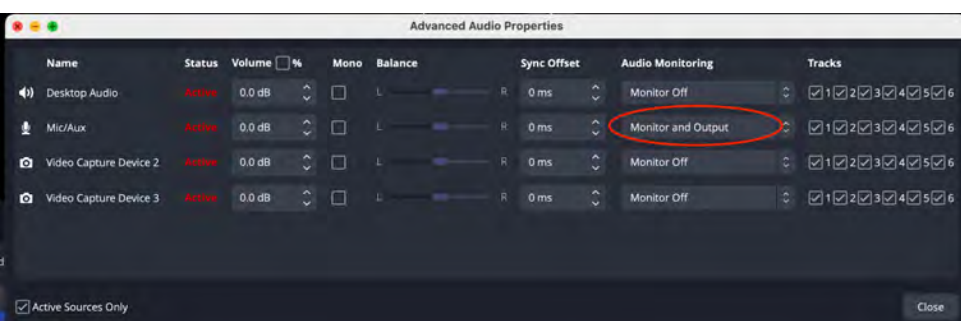
1. make sure OBS is set to Studio Mode
2. go to settings
3. choose custom servers
4. get server URL and stream key from your streaming platform
5. insert server URL and stream key and save settings, press ok

info:

Only start the streaming when the event start.
Can also start the record in OBS when need a backup record. Recording can be done within obs or on atom extreme (SSD)

Stream

Source Setup in OBS



Sound setup in OBS:

1. click the three dots next to the Mic/Aux, the properties need to be changed to "Mikrofon(2- Blackmagic Design)"
2. click the three dots again, open the Advanced Audio Properties
3. make sure the monitor and output is chosen for Mic/Aux
4. plug in headphones in computer to see if you can hear the monitor